



Tech  
Creative  
Production

Just imagine

# TECH & IT ORDER FORM

---

**World Travel Market 2024**

05 - 07 November 2024

Excel, London



Last Early Bird Online Orders: 05/10/2024

Last Standard Orders: 30/10/2024

Online Order Password: WTM2024

Contact DBpixelhouse at: **+44 (0)345 226 3083**

# CURRENT SPECIAL OFFERS

---

> 2 incredible displays to ensure that your exhibition is the best it can be - now **half price**



## 1 - 55" TOLED SCREEN

This cutting-edge GHOSTLED screen brings content to life with a holographic effect.

**50% OFF**

**£1,250.00**



## 2 - 55" SAMSUNG QN700 8K

Show off your content in 8K with the Samsung QN700

**50% OFF**

**£499.00**

# MONITORS & ACCESSORIES

>All monitors are supplied with a wall fixing bracket and 2m cables.



Rate Type (£)	Early	Standard
98" LED Monitor -4k	Contact Us	Contact Us
90" LED Monitor -HD	1,200	1,440
80" LED Monitor - HD	680	816
70" LED Monitor - HD	580	696
65" LED Monitor - 4k	750	900
60" LED Monitor - HD	450	540
55" LED Monitor - 4k	450	540
49" LED Monitor - 4k	375	450
46" LED Monitor - HD	185	222
43" LED Monitor - HD	170	204
40" LED Monitor - HD	160	192
32" LED Monitor - HD	100	120
27" LED Monitor - HD	85	102
22" LED Monitor - HD	40	48
Flat Base Monitor stand inc black tapered sleeve (for 32" - 55" monitors)	35	42
Parabella Stand with glass shelf (for 32" - 90" monitors)	70	84
Media Player	50	60

+44 (0)345 226 3083  
sales@dbpixelhouse.com



# INTERACTIVE TECH

> We have a wide range of interactive tech & creative solutions, from gesture technology to large display activations.

If you require further assistance please get in contact with one of technical experts on **+44 (0)345 226 3083**.



## Rate Type (£)

## Early

## Standard

86" Touchscreen HD, multi-touch

2500

3125

70" Touchscreen HD, multi-touch

1450

1740

65" Touchscreen HD, multi-touch

1155

1350

55" Touchscreen HD, multi-touch

835

1002

46" Touchscreen HD, multi-touch

540

648

42" Touchscreen HD, multi-touch

450

540

32" Touchscreen HD, multi-touch

350

420

23" Touchscreen HD, all-in-one PC

275

330

22" Touchscreen HD, multi-touch

185

222

Please get in touch today to discuss how we attract and engage your customers with:

- Gesture driven technology.
- Interactive displays
- Content activation

> For bespoke requirements contact us at:

**+44 (0)345 226 3083**

**sales@dbpixelhouse.com**



# TABLETS & COMPUTER ACCESSORIES

> We have an extensive range of state of the art iPads and iPad accessories. We also have a wide range of desktops and laptops available for hire; ranging from Nuc i7 to Apple Macs.

Please get in touch to discuss further: [+44 \(0\)345 226 3083](tel:+44(0)3452263083).



Rate Type (£)	Early	Standard
Desktop (minimum spec i7)	65	78
Laptop (minimum spec i7)	176	220
Apple MacBook Pro (minimum spec i7)	280	350
Apple iMac 21.5"	220	240
Apple iMac 27"	265	318
Mini PC Intel Nuc i7	85	106.25
Apple Mac Mini, i7	150	187.50
Wired Keyboard	5	6
Wired Mouse	5	6
Wireless Keyboard & Mouse	20	24
Hand Held Presentation Mouse	10	12

> For more information on our range please contact us at:

[+44 \(0\)345 226 3083](tel:+44(0)3452263083)

[sales@dbpixelhouse.com](mailto:sales@dbpixelhouse.com)



# UNIQUE DISPLAYS

---

> At DBpixelhouse, we like to provide innovative solutions to enable you to stand out from the crowd.

The displays below are few examples of what we can offer.



- Videowalls
- T-OLED Screens
- Smart Window
- Hypervision solo
- Pyramoid
- Object Recognition Tables
- iPad Walls
- Projection Mapping
- Screen Automation
- Digital Signage

---

> We're constantly investing in new technology and ways of integrating.

For bespoke inquiries and more information on unique displays please inquire at:

**+44 (0)345 226 3083**

**[sales@dbpixelhouse.com](mailto:sales@dbpixelhouse.com)**



# NETWORKS

> Connectivity across exhibition stands is an ever growing demand and we can help you to set up the perfect network to connect with clients. Our below rates are just a small selection of the most ordered requirements.

Rate Type (£)	Early	Standard
8 Port Router	36	45
8 Port Switch	24	30
24 Port Switch	72	90
8 Port Managed Switch	44	55
24 Port Managed Switch	84	105
48 Port Managed Switch	160	200
Wifi Access Point	96	120
Network Management System Wifi Management	300	375
	1656	2070
Small - 1x 8 Port Router, 1x Wifi AP, 1x 8 Port Switch	140	176
Medium - 1x 8 Port Router, 2x Wifi AP, 1x 24 Port Switch	270	338
Large / Bespoke Requirements	Contact Us	Contact Us

> Please note, before you order from us you will need to order an internet line from the venue as this is not provided through us. IT Technicians available on request. For bespoke requirements please contact us at:

+44 (0)345 226 3083  
sales@dbpixelhouse.com



# LED & LCD VIDEOWALLS

---

> Please note all products have been chosen to keep build time to a minimum and are all able to be flown or installed within an aperture.

---



## > 1.5mm LED

---

As our highest-resolution systems, our 1.5mm LED panels can create some of the most visually detailed displays of any supplier in Europe. Full HD (1080p) image can be achieved with a 3-metre-wide wall, whilst ultra HD (4K) can be achieved with a 5-metre-wide wall, making it ideal for spectacular detail or small text.

Like many high-end televisions, a 1.5mm wall supports HDR10 content, giving superb visibility and contrast between the light and dark elements of your content.

In addition, the panels may be installed 2.5° concave, enabling the design of immersive curved configurations, or even complete wrap-around tunnels.







## > 2.6mm LED

For large-format displays, our 2.6mm options present the most versatile installation options.

Whilst full HD (1080p) resolution can be achieved with a wall of 5m metres, 2.6mm LED panels present opportunity to be installed in both convex and concave angles up to and including 10° to be built into flooring or suspended from above as a banner or ceiling.

Alternatively, they can be installed as flat floor or aperture-mounted flat screens, where full HD (1080p) can be achieved in 5 metres.



+44 (0)345 226 3083  
sales@dbpixelhouse.com





## > 3.9mm LED

Our 3.9mm LED system presents the best option for displays for large audiences or for at distance. They are ideal for suspended banners, large posters or “big screens” for sporting applications.

The 3.9mm system is also well-suited for outdoor applications, with a wide range of brightness levels available to ensure optimal visibility and contrast, whatever the environment.



# LED TRAILERS

> Bring your brand to a wider audience



Our screens are **industry leading full HD 3.9mm pixel density** for superior image reproduction and are fully height adjustable with 360° screen rotation capability.

They are **quick to deploy and offer unparalleled flexibility** compared to traditional truss-built LED screens.

The Pixel Trux themselves also offer branding opportunities on all 4 sides, **maximising the potential for brand exposure.**

## VERSATILE

- The possibilities of our Pixel Trux are endless! They can be used for a range of indoor and outdoor events, from sporting events and festivals to city centre events and trade shows.

## MOBILE

- Pixel Trux are reshaping events. It's now easier than ever to get huge high quality LED screen systems to, from, and around your event!

## ENGAGEMENT

- Get more eyes on your content and your brand! Our 28sqm LED walls are 33% larger than the standard 21sqm and will boost engagement at your event and help you create higher levels of interest.

## EASY TO USE

- The Pixel Trux are specifically designed to be swiftly deployed and easy to operate, saving time and money. Set-up takes less than an hour!

+44 (0)345 226 3083  
sales@dbpixelhouse.com



# CONFERENCE EQUIPMENT

---



- Staging
- Lighting
- Streaming
- Set
- Audio
- Show Production
- Virtual Sets
- Green Screen
- Filming

---

> We offer solutions for any event ranging from a seminar room to a full virtual live event production.

Get in touch to find out more about our Hybrid Events Productions.

For bespoke inquiries please contact us at:

+44 (0)345 226 3083  
sales@dbpixelhouse.com



# CREATIVE SERVICES

---

> We offer a multitude of creative services that involve content editing and creation, filming, and more



## > Content Edit

Rendering content already at our disposal for LED and specific video wall configurations. Stitching assets already made from the client into a video. Basic Fade animations, exporting to one file that will work. This can include cutting parts out.



## > Video Creation

Use existing content to produce a promo video or informative piece. This will include brief overview documentation, story board, review comments, final piece, and storage for 1 year.



## > Onsite Static Recording (with edit bolt-on)

We can record conferences from 1 or more angles, for specific sessions or for the organiser. Collate all the assets and send over to client with breakdown of days and sessions.



> Onsite Dynamic Recording (with edit bolt-on)

1 or more Roaming cameras on stand or venue. Recording “highlights” of the show to send to client.



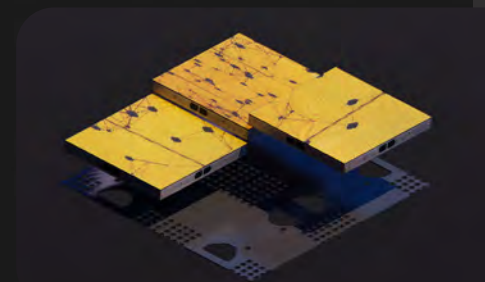
> Time-lapse

Stand recording on build up / show / breakdown. This recording will be done over a longer length of time.



> Visualisations and Renders

Visualisation service for equipment, stands, exhibitions, venues, and any other 3-dimensional space to be built or quoted



# HOW TO ORDER WITH US

> We're here to help you get the most from the event and shall endeavour to do everything in our control to help you achieve this.

To help us produce an accurate quotation we may require a stand plan or visual.

> Order Online at:

<https://www.dbpixelhouse.com/book/>

> Password: WTM2024



> Alternatively call

+44 (0)345 226 3083



Or email your technical brief to us and we will produce a bespoke quote for you.

> Compulsory	Damage waiver premium	Covers against damage and theft, see our T&C's (Does NOT include tablets)	15% of Equipment subtotal
> Compulsory	Service Charge	Our full service covers pre-show administration, delivery to your booth, full installation, case storage, daily switch on & off, dismantle & pack up. Technical assistance on site is available 08:00 - 18:00 daily (See Service Charge information)	40% of Equipment subtotal
> Optional	Dedicated Technician	Get your very own experienced DB Tech, on standby, to assist you with AV & IT at your stand (excl hotel & per diems as required)	£380.00 per day
> Optional	Additional Cable	All monitors are supplied with 2m cable as standard. Additional cable is available for hire.	£1.00 per metre > 5m
> Where applicable	Credit Card Transactions	All credit card transactions will be processed in GBP Sterling at the published rate on the day of processing. Rental payment is due in advance.	VAT 20% (if applicable)

[sales@dbpixelhouse.com](mailto:sales@dbpixelhouse.com)